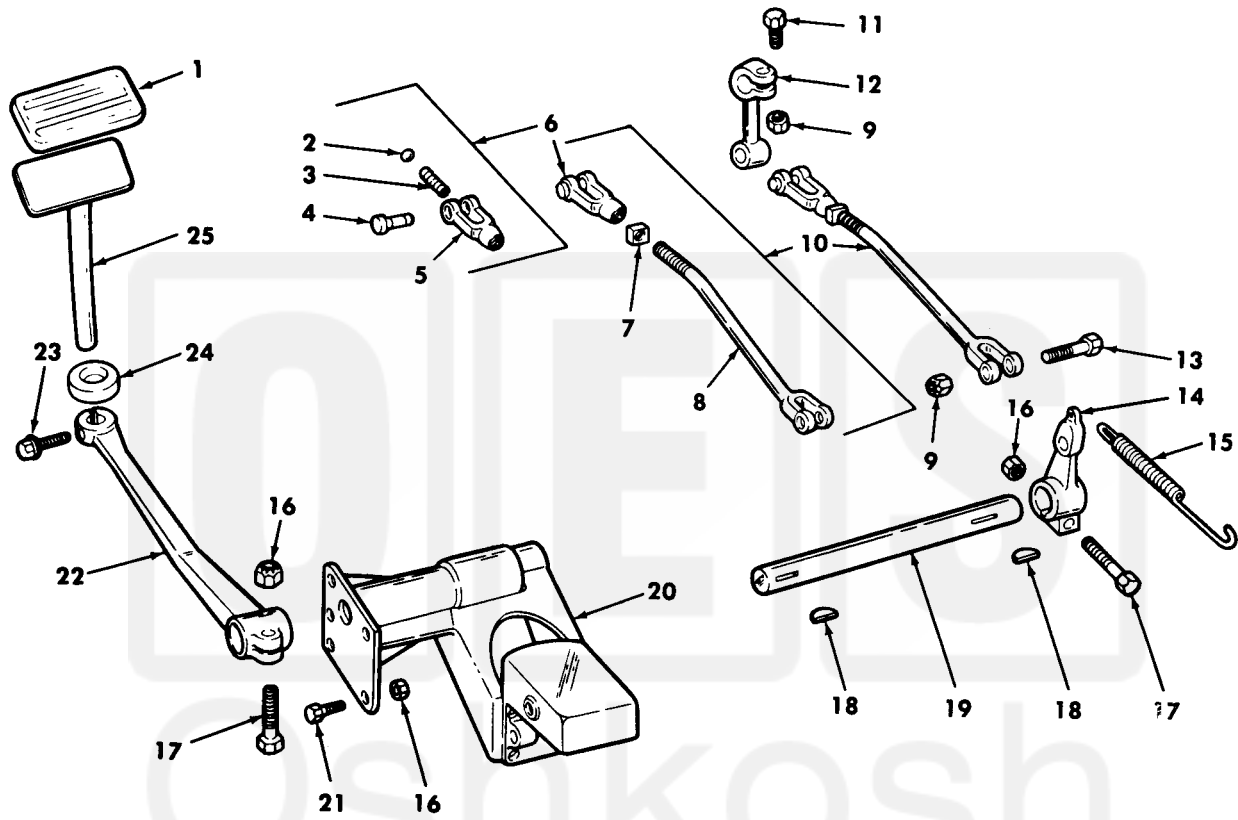


Current part is item (1,9) on diagram. Available at [www.oshkoshequipment.com](http://www.oshkoshequipment.com)

(1) FIG. NO.	(2) ITEM NO.	(3) SMR CODE	(4) NATIONAL STOCK NUMBER	(5) PART NUMBER	(6) DESCRIPTION	(7) U/M	(8) INC IN UNIT
GROUP 02 - CLUTCH							
0202 - CLUTCH RELEASE MECHANISM							
14	1	PAOZZ	2540-00-752-0971	7520971	19207 PAD,PEDAL:RUBBER	EA	1
14	2	PAOZZ	3110-00-943-6113	MS19060-6	96906 BEARING	EA	1
14	3	PAOZZ	5360-00-692-6059	7373229	19207 SPRING,HELICAL	EA	1
14	4	PAOZZ	5315-00-737-3224	7373224	19207 PIN: CLEVIS	EA	1
14	5	PAOZZ	5340-00-739-7542	7397542	19207 CLEVIS	EA	1
14	6	PAOZZ	5340-00-692-6060	7373234	19207 CLEVIS AND PIN ASSEMBLY: ADJUSTABLE, CONTROL ROD ASSEMBLY	EA	1
14	7	PAOZZ	5310-00-732-0560	MS51968-14	96906 NUT	EA	1
14	8	XAOZZ		7373352	19207 ROD	EA	1
14	9	PAOZZ	5310-00-067-9507	MS51922-37	96906 NUT,SELF-LOCKING	EA	2
14	10	PAOZZ	2540-00-752-0977	7520977	19207 ROD ASSEMBLY: W/YOKE ASSEMBLY	EA	1
14	11	PAOZZ	5305-00-716-8183	MS90726-116	96906 SCREW,CAP,HEXAGON HEAD	EA	1
14	12	PAOZZ	2520-00-752-0969	7520969	19207 LEVER,REMOTE CONTROL	EA	1
14	13	PAOZZ	5305-00-226-7768	MS90726-115	96906 SCREW,CAP,HEXAGON HEAD	EA	1
14	14	PAOZZ	2520-00-752-0970	720970	19207 LEVER,CLUTCH SHAFT	EA	1
14	15	PAOZZ	5360-00-324-1047	7520981	19207 SPRING,HELICAL,EXTENSION: RETURN CLUTCH	EA	1
14	16	PAOZZ	5305-00-269-2809	MS51922-21	96906 NUT,SELF-LOCKING	EA	7
14	17	PAOZZ	2520-00-752-0968	MS90726-66	96906 SCREW,CAP,HEXAGON HEAD	EA	2
14	18	PAOZZ	5315-00-616-5529	MS35756-16	96906 KEY,WOODRUFF	EA	2
14	19	PAOZZ	2520-00-752-0978	7520978	19207 SHAFT:PEDAL LEVER	EA	1
14	20	PAOZZ	2520-00-752-0982	7520982	19207 SUPPORT: PEDAL LEVER SHAFT	EA	1
14	21	PAOZZ	5305-00-269-3213	MS90725-62	96906 SCREW,CAP,HEXAGON HEAD	EA	5
14	22	PAOZZ	2520-00-752-0968	7520968	19207 LEVER,REMOTE CONTROL	EA	1
14	23	PAOZZ	5306-00-696-5290	455171	24617 BOLT,ASSEMBLED WASHER	EA	1
14	24	PAOZZ	5340-00-752-0964	7520964	19207 BUMPER,RUBBER	EA	1
14	25	PAOZZ	2520-00-752-0975	7520975	19207 PEDAL	EA	1



Current part is item (1,9) on diagram. Available at [www.oshkoshequipment.com](http://www.oshkoshequipment.com)



TA 096390

Figure 14. Clutch pedal and linkage

(1) FIG. NO.	(2) (a) ITEM NO.	(3) SMR CODE	(3) NATIONAL STOCK NUMBER	(4) PART NUMBER	(5) FSCM	(6) DESCRIPTION	(7) U/M	(8) INC IN UNIT
1206 - MECHANICAL BRAKE SYSTEM								
120	1	PAOZZ	5360-00-324-1047	7520981	19207	SPRING, HELICAL, EXTENSION: RETURN, FOOT BRAKE LEVER	EA	1
120	2	PAOZZ	5315-00-839-5822	MS24665-353	96906	PIN, COTTER	EA	1
120	3	PAOZZ	5315-00-753-9311	7539311	19207	PIN, STRAIGHT, HEADED: MASTER CYLINDER TO BRAKE PEDAL LEVER	EA	1
120	4	PAOZZ	2540-00-753-9248	7539248	19207	LEVER, REMOTE CONTROL: PELAL	EA	1
120	5	PAOZZ	5305-00-269-3214	MS90725-64	96906	SCREW, ASSEMBLED WASHER	EA	1
120	6	PAOZZ	5310-00-543-2705	MS35338-27	96906	WASHER, LOCK	EA	1
120	7	PAOZZ	2520-00-752-0975	7520975	19207	PEDAL: BRAKE	EA	1
120	8	PAOZZ	5340-00-752-0964	7520964	19207	BUMPER, RUBBER: PEDAL LEVER	EA	1
120	9	PAOZZ	2540-00-752-0971	7520971	19207	PAD, PEDAL: BRAKE	EA	1
120	10	PAOZZ	4730-00-050-4208	MS15003-1	96906	FITTING, LUBRICATION: BRAKE PEDAL LEVER	EA	1



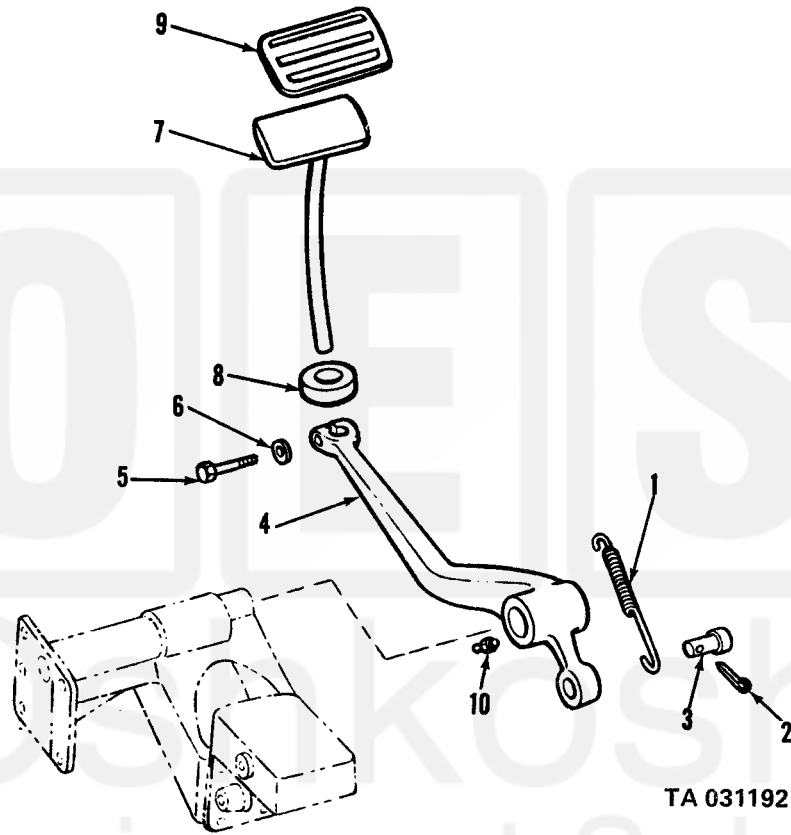


Figure 120. Brake pedal linkage.